

**HITACHI**  
Inspire the Next

The New Generation Ultrasound Platform

**ARIETTA 60**

**ALOKA**  
illuminate the change



# CLEARLY DEFINED

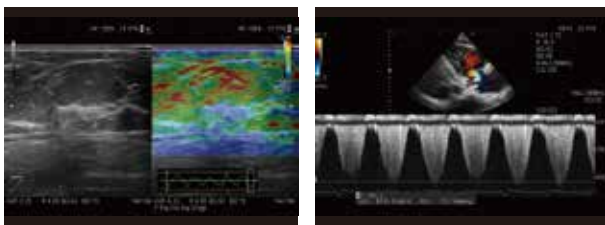
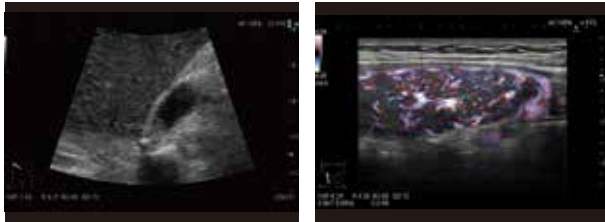
Diagnostic ultrasound imaging is a first-choice modality in contemporary medicine. Further refining this "sound visualization technology" so that it can sense even more subtle changes could provide more reassurance for the clinicians who practice ultrasound diagnostics and the patients who undergo examinations. To accomplish this mission of refinement, technologies cultivated by Hitachi Medical and Aloka have been fused to develop a new generation diagnostic ultrasound platform. ARIETTA 60 combines compact design with high performance and functionality, providing the image quality instrumental for accurate diagnostics.

## ARIETTA 60



### Clearly Defined

Fully featured for seamless ultrasound diagnostics.  
Robust menu of functions for a wide variety of clinical applications.



### User Friendly Design

Enhanced Usability for Efficient Work Flow



High performance is achieved in a compact, lightweight form designed with ergonomics that fit to any number of clinical settings. The system is 25% lighter than our previous models and equipped with large castors, providing ease of movement.



The layout of controls has been arranged to facilitate smooth operation, and a large palm rest at the center is designed to mitigate operator stress during examinations.

- The specifications, shape and color of this product are subject to change without notice.
- The standard components and optional items vary depending on the country.
- ARIETTA is registered trademarks or trademarks of Hitachi Aloka Medical, Ltd. in Japan and other countries.

### Hitachi Aloka Medical, Ltd.

6-22-1, Mure, Mitaka-shi, Tokyo, 181-8622, Japan  
TEL: 81-422-45-6049, FAX: 81-422-45-4058  
Website: <http://www.hitachi-aloka.com/>



We strive to provide quality products and services for our customers.  
We operate with regard for the environment.